

BOKA

REAL ESTATE



RARE, OVERSIZED TOWNHOUSE IN PRIME, CENTRAL LOCATION

Now this is something you don't see every day!

Are you an investor, first home buyer, or looking for a family home to live in? If so, this 4 bedroom home with a desirable floor plan will be sure to tick all your boxes. This is an excellent opportunity for any investor or live-in owner and features all the advantages of townhouse living with excellent style, security and a fabulous location that's close to all the action. This is a large, light filled home with an impressive layout, and this property can make you money – before or even after your family moves in! This stylish home is a great buy with its ideal location. With a less than 10 minute walk to restaurants, cafes, shops, public transport, schools and hospitals. Currently tenanted at \$650 per week (gross yield 5.02%) by a house proud tenant who previously sub-let the self-contained top floor suite of rooms. One of only 7 townhouses in a highly sought-after, family friendly complex that features spacious, safe gardens where children care for the communal vegie patch.

This sensational townhouse is priced to sell and expected to be sold fast. Features include:

- Freshly painted throughout
 - 4 spacious bedrooms
 - Mirrored built ins
 - Oversized main bedroom
 - 2 renovated bathrooms
 - Third toilet in laundry
 - Recently updated kitchen with space efficient design
 - Low maintenance, good sized courtyard
 - Easy to clean laminate flooring through upper levels
 - Tiled throughout open plan living area
 - Split system air conditioning
 - Secure parking
 - Central to public transport, Westfield shopping centre, medical facilities and schools
- This huge, 3 level townhouse is a rare find offering a size and potential that is not to be missed.



53/100 Terminus Street, Liverpool



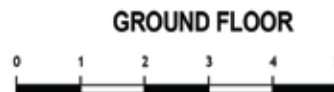
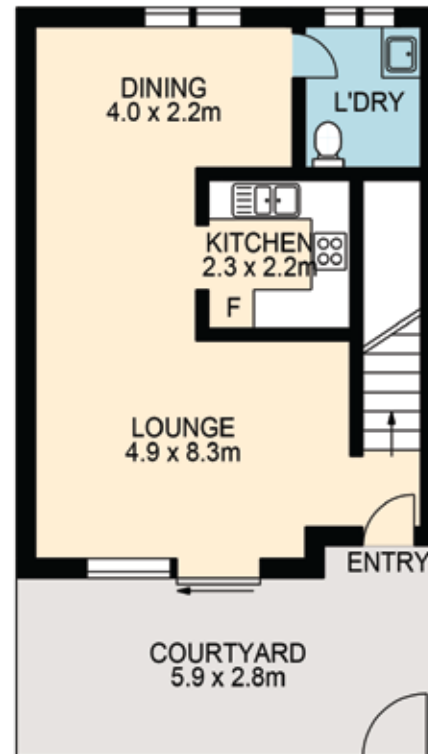
53/100 TERMINUS STREET, LIVERPOOL



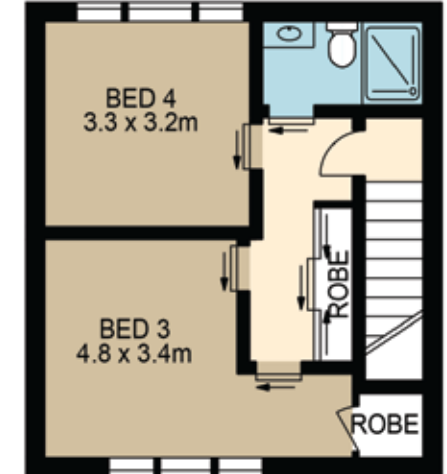
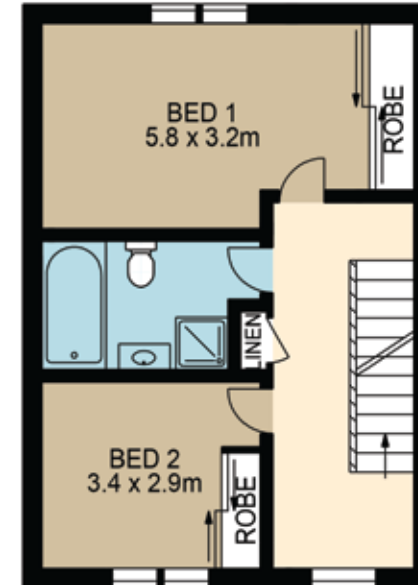
Christina Pincevic
0450 516 928



Ivana Robinson
0421 555 100



www.assetphotographers.com.au



Please note these measurements are approximate only. The plans are intended as a rough guide for illustrative purpose. It is not warranted or guaranteed to be correct nor is it part of the sale or rental contract

